



Terreno para Uso Comercial en Renta

Av. Miguel Hidalgo, Concepción la Cruz Reserva Territorial Atlixcáyotl,
San Ángel Primera Sección. Puebla

Superficie: 3,227.13 m²

Precio de Renta: 60.00 MXN x m²



Servicios Inmobiliarios Integrales

www.pivasa.com.mx

Síguenos



Descarga **PIVASA** to go



Ubicación

Bldv. Atlixco

Parque del Arte

Angelópolis

Bldv. Niño Poblano

Vía San Ángel

Home Depot

Periférico

Av. De las Torres

Vía Atlixcáyotl

CCU BUAP

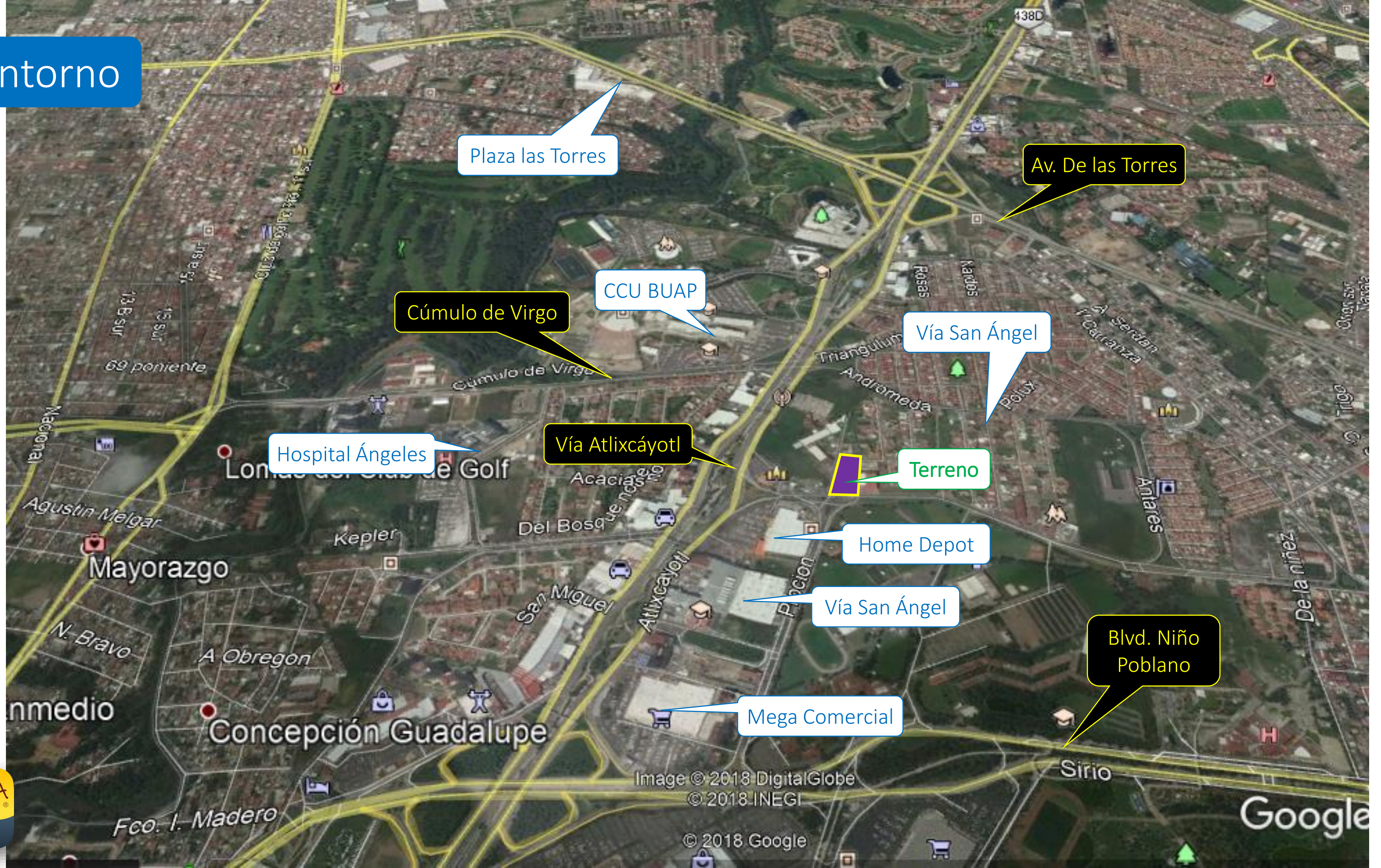
Ecoparque

Cúmulo de Virgo

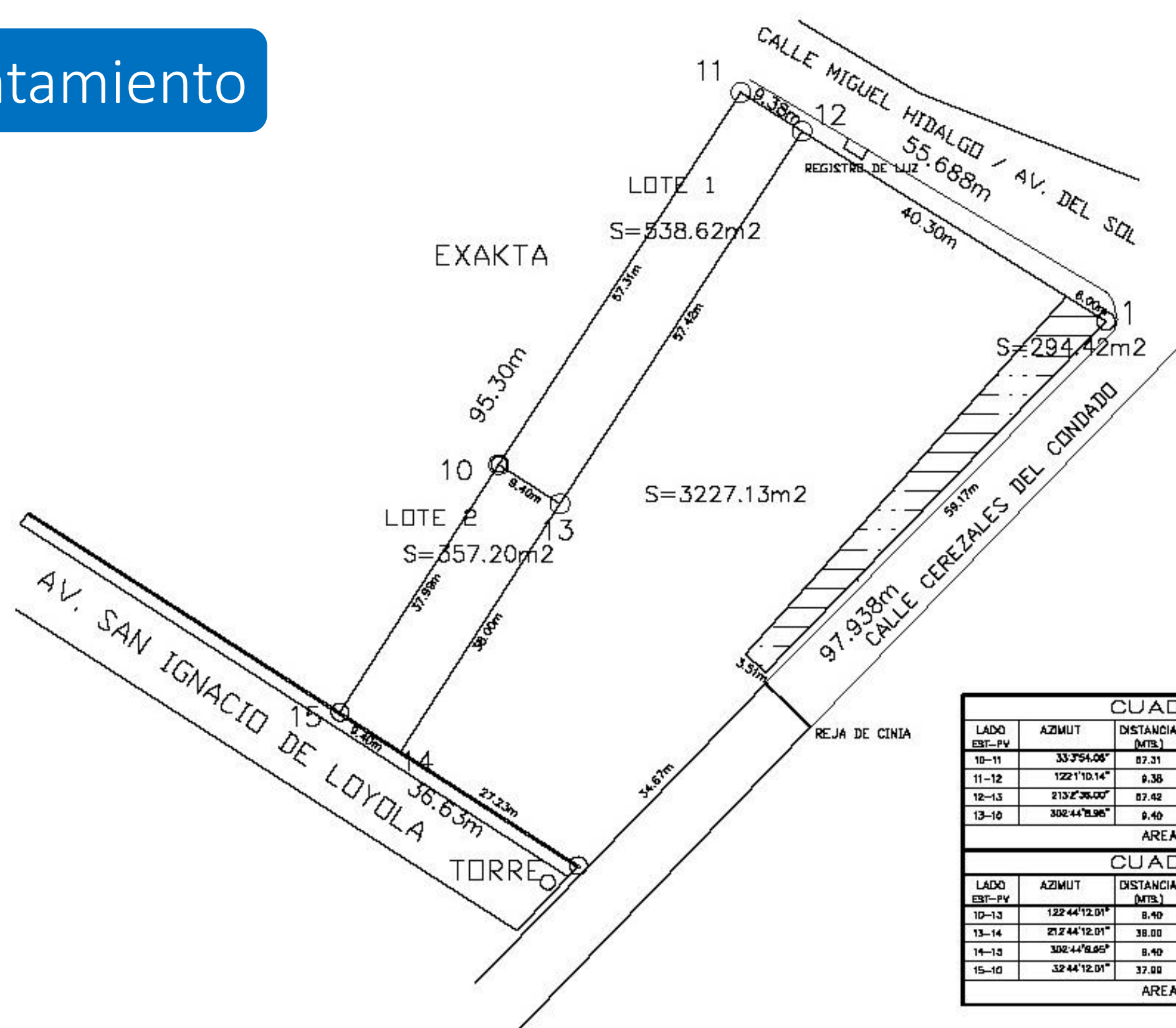
Ir al mapa



Entorno



Levantamiento



S=3227.13m²
S=294.42m²
S=3521.55m²

| CUADRO DE CONSTRUCCION LOTE 1 | | | | | | | | |
|-------------------------------|---------------|---------------------|----------------------|--------------|------------------|--------------------------|---------------------|--------------------|
| LADO EST-PV | AZIMUT | DISTANCIA (MTS.) | COORDENADAS UTM | | CONVERGENCIA | FACTOR DE ESC. LINEAL | LATITUD | LONGITUD |
| | | | ESTE (N) | NORTE (Y) | | | | |
| 10-11 | 33°35'4.06" | 07.31 | 576,790.39 | 2,103,889.27 | -0°14'48.830083" | 0.88897871 | 10°13'4.017731" N | 98°14'30.280588" W |
| 11-12 | 122°1'10.14" | 0.38 | 576,828.00 | 2,103,887.30 | -0°14'50.300600" | 0.99987877 | 10°13'57.5715" N | 98°14'28.214022" W |
| 12-13 | 213°2'36.00" | 07.42 | 576,834.81 | 2,103,882.33 | -0°14'50.387028" | 0.88897877 | 10°13'55.412798" N | 98°14'28.842703" W |
| 13-10 | 302°44'18.96" | 0.40 | 576,803.30 | 2,103,884.10 | -0°14'50.015040" | 0.99987872 | 10°13'53.8851241" N | 98°14'30.020848" W |
| AREA = 538.62 m2 | | | PERIMETRO = 133.51 m | | | | | |

| CUADRO DE CONSTRUCCION LOTE 2 | | | | | | | | |
|-------------------------------|---------------|---------------------|---------------------|--------------|------------------|--------------------------|---------------------|--------------------|
| LADO EST-PV | AZIMUT | DISTANCIA (MTS.) | COORDENADAS UTM | | CONVERGENCIA | FACTOR DE ESC. LINEAL | LATITUD | LONGITUD |
| | | | ESTE (N) | NORTE (Y) | | | | |
| 10-13 | 122°44'12.01" | 8.40 | 576,793.39 | 2,103,889.27 | -0°14'48.830083" | 0.88897871 | 10°13'4.017731" N | 98°14'30.280588" W |
| 13-14 | 212°44'12.01" | 38.00 | 576,803.30 | 2,103,884.10 | -0°14'50.010643" | 0.88897872 | 10°13'53.8851241" N | 98°14'30.020848" W |
| 14-15 | 302°44'18.96" | 8.40 | 576,782.73 | 2,103,882.23 | -0°14'48.772242" | 0.88897888 | 10°13'52.814251" N | 98°14'30.228514" W |
| 15-10 | 32°44'12.01" | 37.00 | 576,774.84 | 2,103,857.31 | -0°14'48.585383" | 0.88897867 | 10°13'52.680731" N | 98°14'30.888237" W |
| AREA = 357.20 m2 | | | PERIMETRO = 94.80 m | | | | | |

ESCALA GRÁFICA



INFORMES Y VENTAS

303
0505



facebook.com/PIVASA

ventas@pivasa.com.mx

www.pivasa.com.mx

